



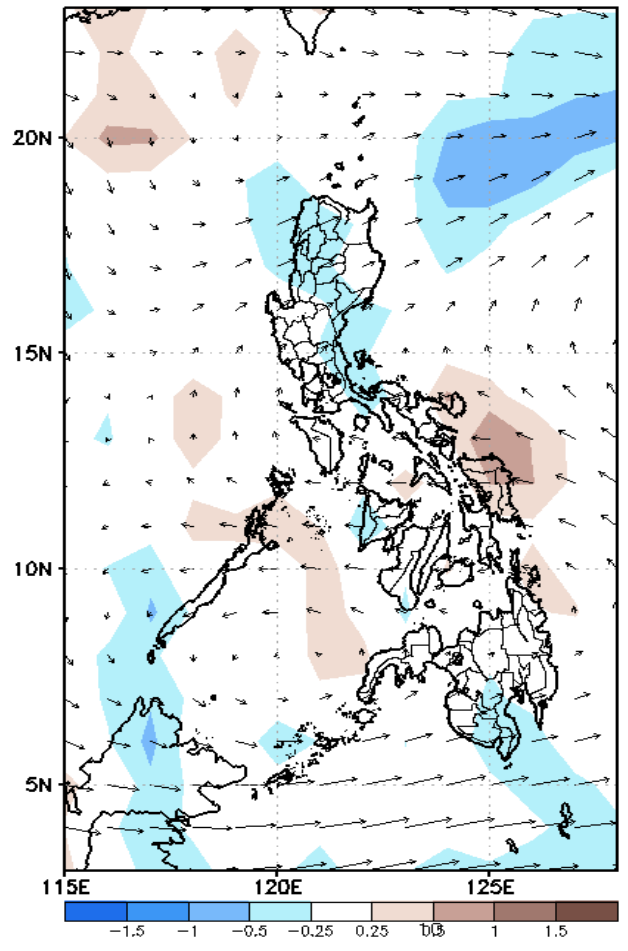
Week 1 & Week 2 Forecast for the Philippines using GEFS Model



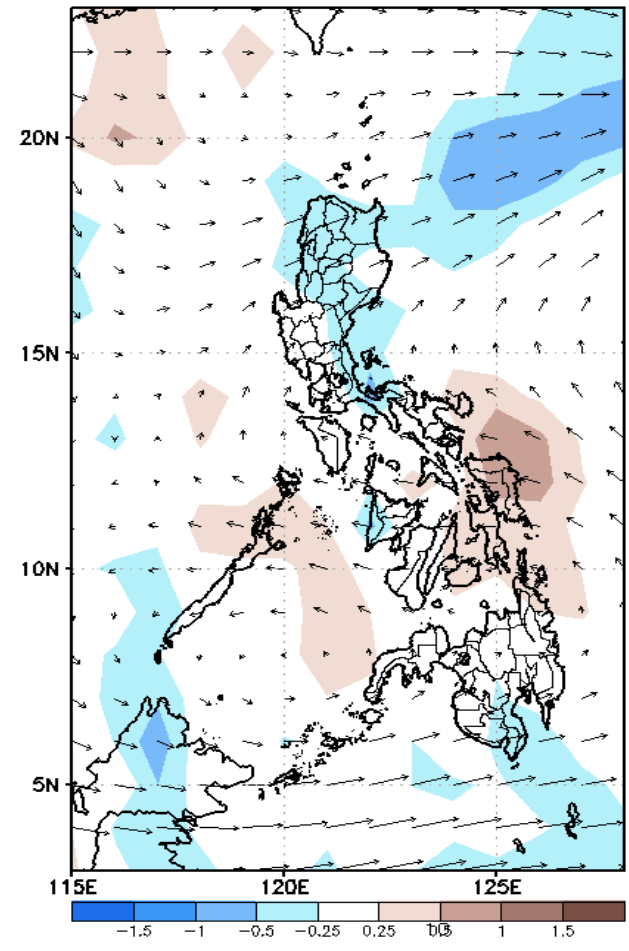
GEFS Week-1 Forecasts: Wind Anomaly Forecast

Week 1: Dec 23-29, 2022

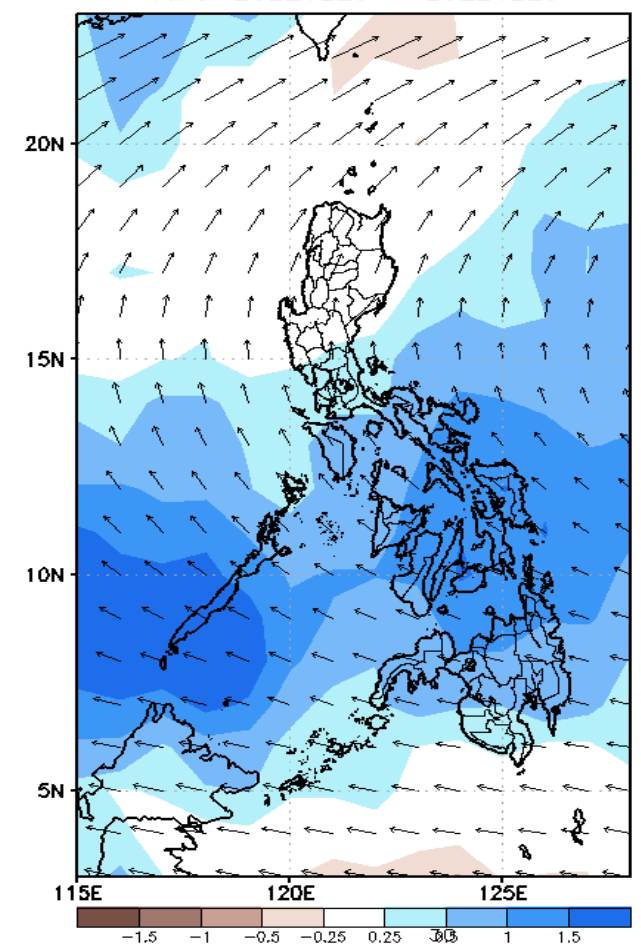
GEFS Week-1 850-hPa Divergence and Wind Anom
Valid: 20221223 - 20221229



GEFS Week-1 700-hPa Divergence and Wind Anom
Valid: 20221223 - 20221229



GEFS Week-1 200-hPa Divergence and Wind Anom
Valid: 20221223 - 20221229

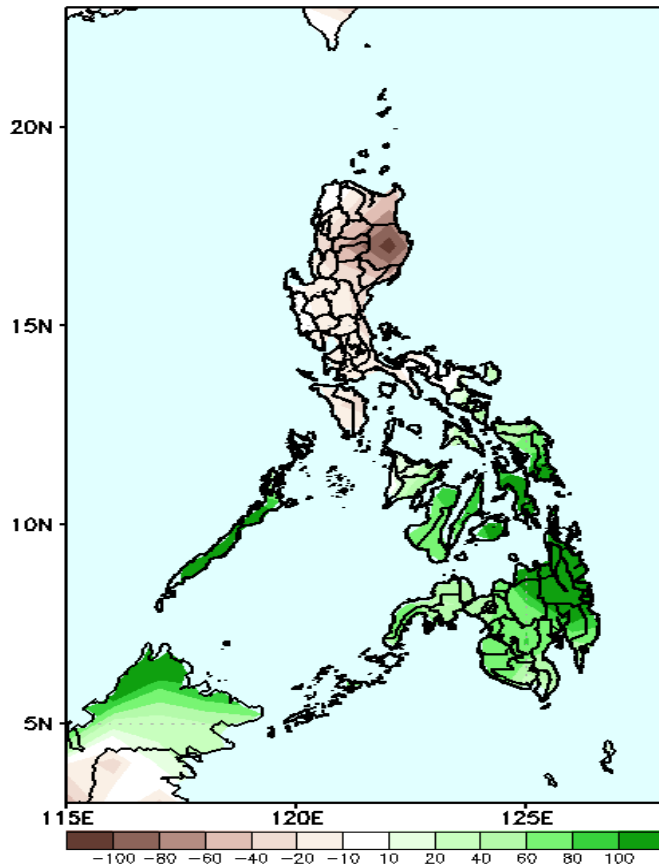


Northeast monsoon affecting most parts of eastern Luzon and Visayas. Easterlies affecting Mindanao during the forecast period.

Precipitation Anomaly and Exceedance Probability > 25/50 mm

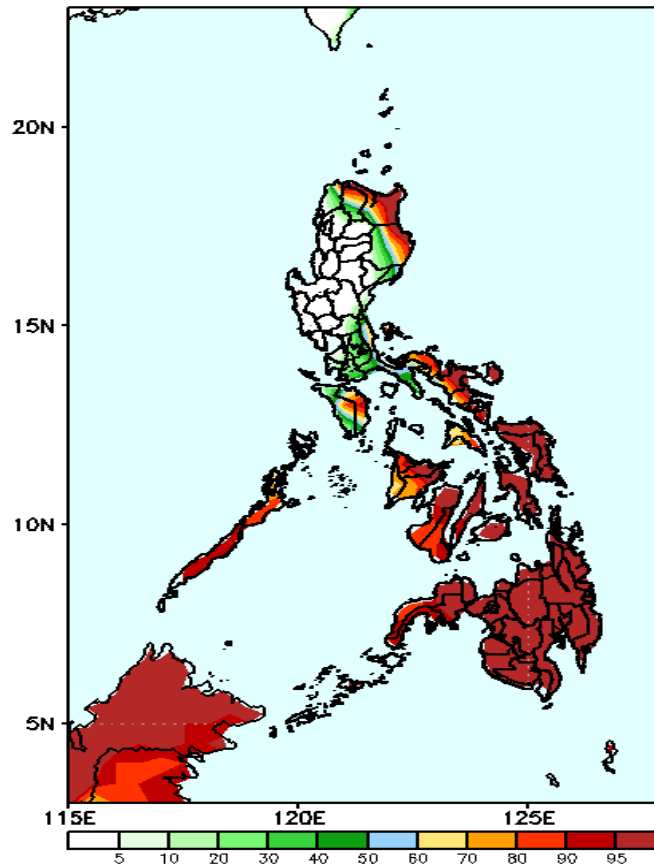
Week 1: Dec 23-29, 2022

GEFS Week-1 Precip Anomaly
Valid: 20221223 - 20221229



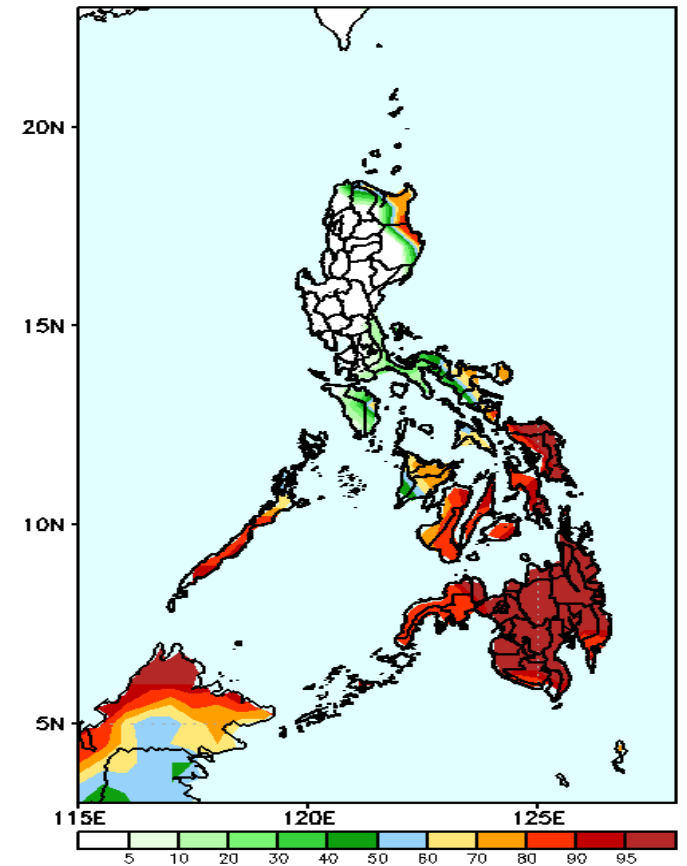
Rainfall deficit of up to 100mm is expected in Isabela, 40-80mm for the rest of Luzon while 80-100mm increase of rainfall in Visayas and Mindanao during the forecast period.

GEFS Week-1 Exceedance Prob. > 25mm
Valid: 20221223 - 20221229



High probability of rainfall to exceed 25mm in Apayao, Cagayan, Isabela, Palawan, Mindoro, most parts of Bicol Region, Visayas and Mindanao while less likely for the rest of Luzon during the forecast period.

GEFS Week-1 Exceedance Prob. > 50mm
Valid: 20221223 - 20221229

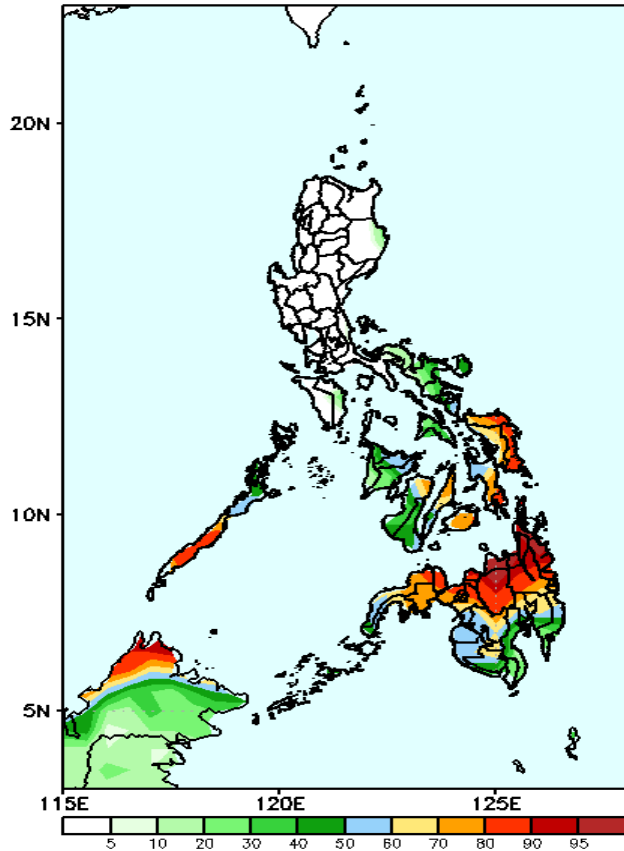


High probability of rainfall to exceed 50mm in the eastern sections of Cagayan and Isabela, Palawan, some areas in Bicol Region and most parts of Visayas and Mindanao while less likely for the rest of Luzon during the forecast period.

Exceedance Probability > 100/150/200 mm

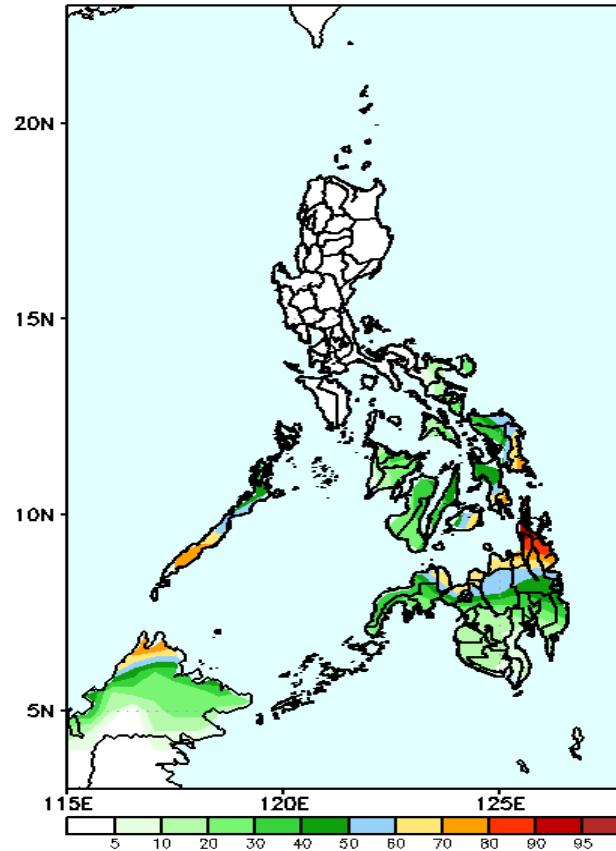
Week 1: Dec 23-29, 2022

GEFS Week-1 Exceedance Prob. > 100mm
Valid: 20221223 - 20221229



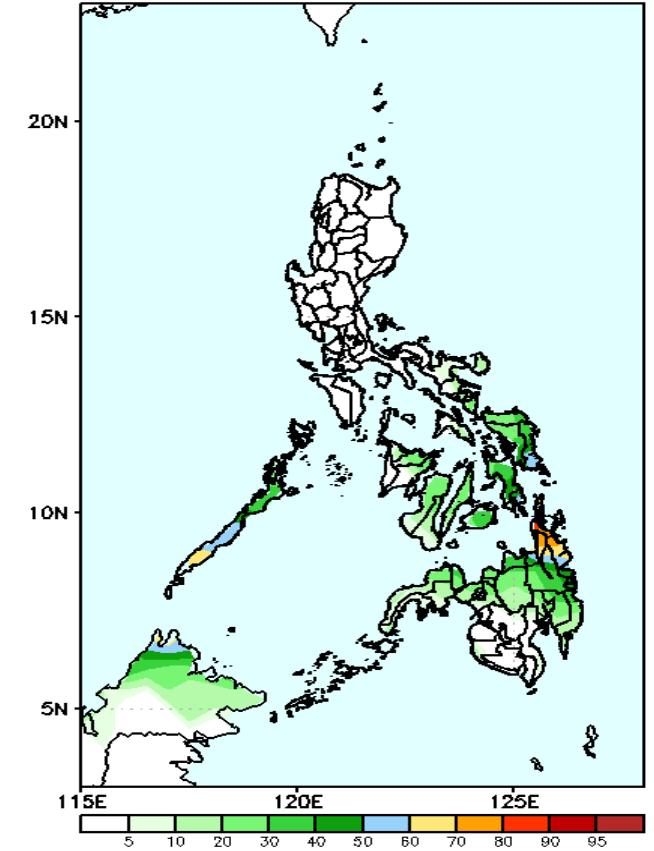
High probability of rainfall to exceed 100mm in Palawan, Eastern & Central Visayas, most parts of CARAGA and Northern Mindanao (including Zamboanga Sibugay) while less likely for the rest of the country during the forecast period.

GEFS Week-1 Exceedance Prob. > 150mm
Valid: 20221223 - 20221229



60-90% probability of rainfall to exceed 150mm in Palawan, Bohol, Eastern Visayas, northern Mindanao and CARAGA Region while less likely for the rest of the country during the forecast period.

GEFS Week-1 Exceedance Prob. > 200mm
Valid: 20221223 - 20221229

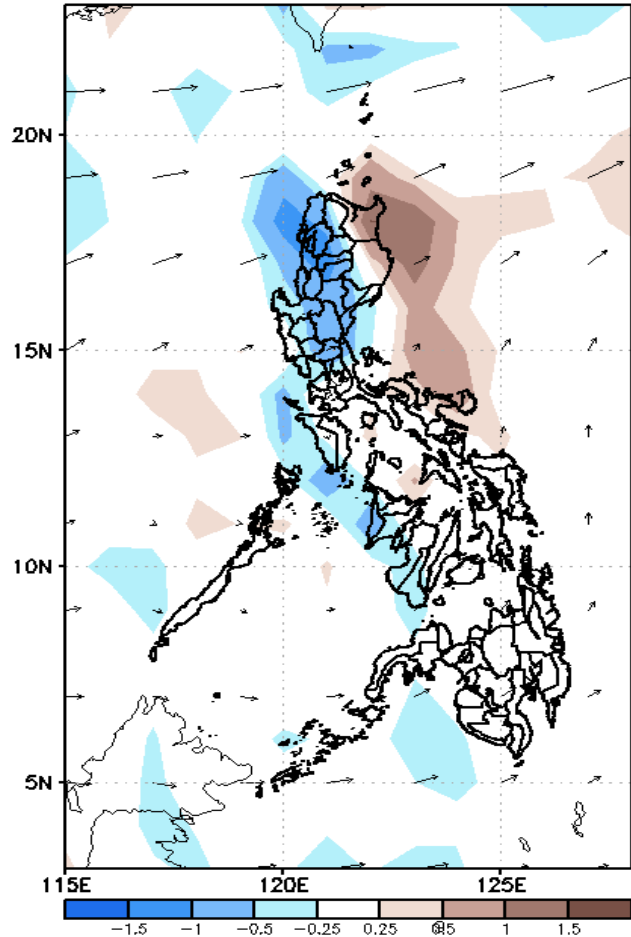


Low probability of rainfall to exceed 200mm in most parts of the country except in CARAGA Region during the forecast period.

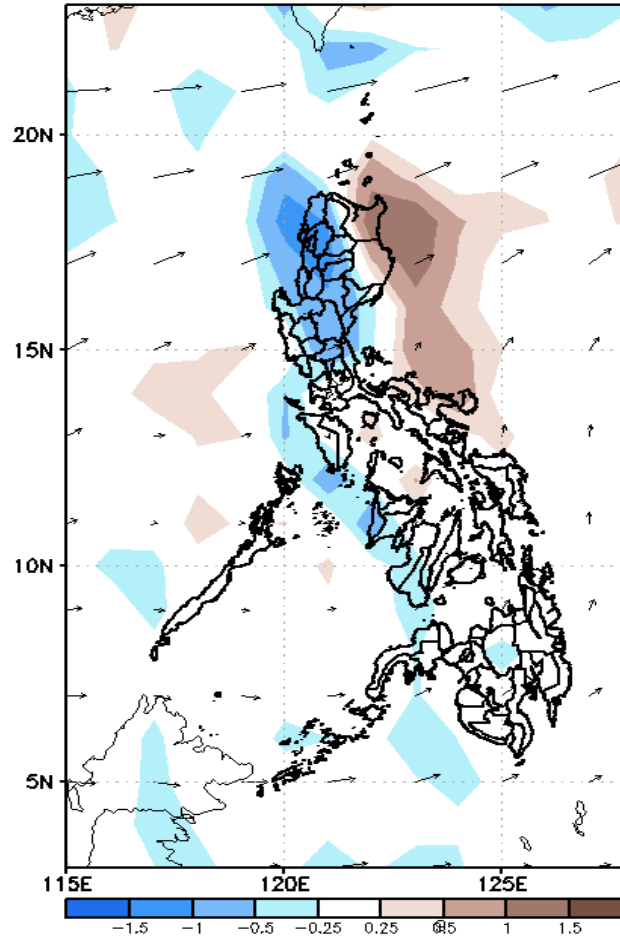
GEFS Week-2 Forecasts: Wind Anomaly Forecast

Week 2: Dec 30- Jan 05, 2023

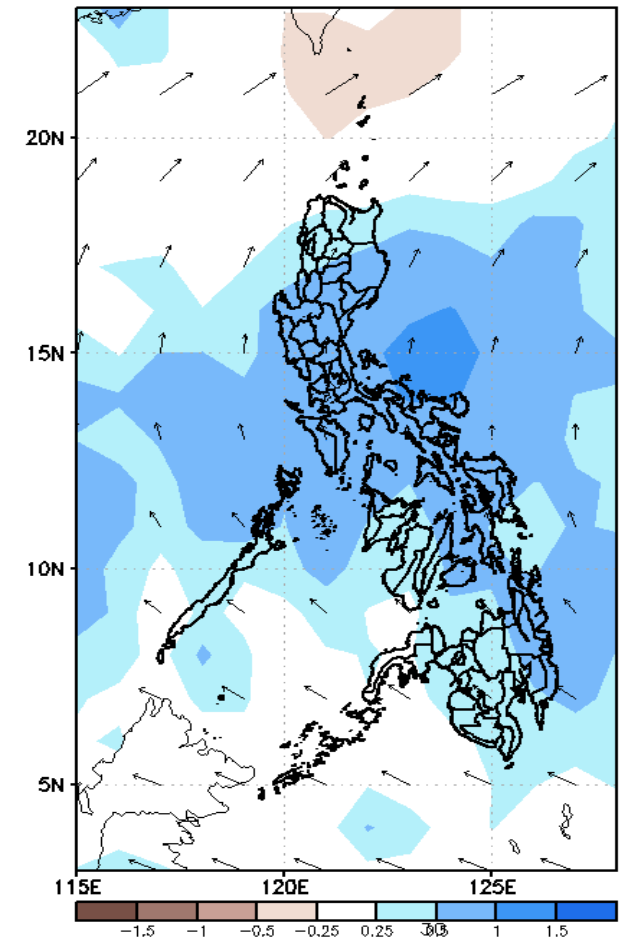
GEFS Week-2 850-hPa Divergence and Wind Anom
Valid: 20221230 - 20230105



GEFS Week-2 700-hPa Divergence and Wind Anom
Valid: 20221230 - 20230105



GEFS week-2 200-hPa Divergence and Wind Anom
Valid: 20221230 - 20230105

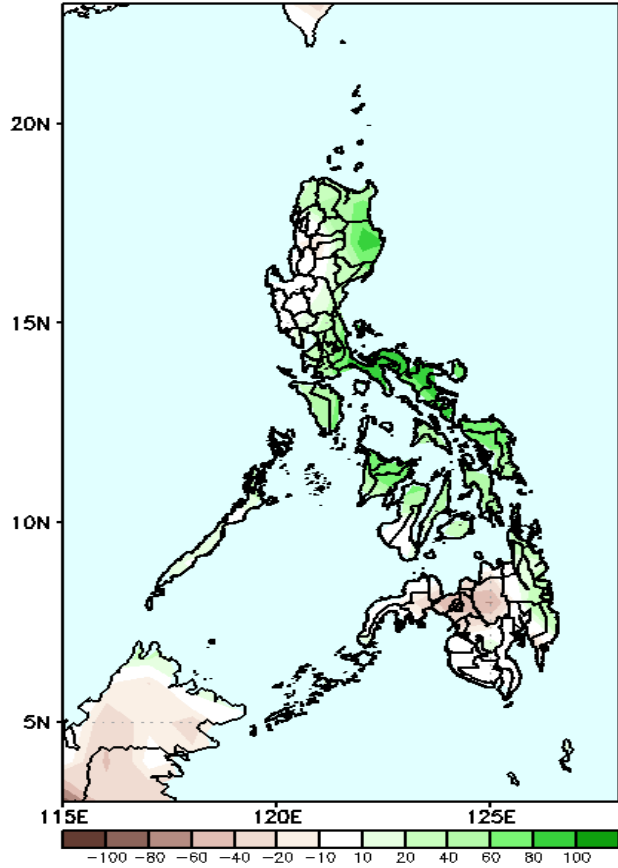


Northeast monsoon is forecasted to affect most parts of Luzon. Easterlies affecting the rest of the country during the forecast period.

Precipitation Anomaly and Exceedance Probability > 25/50 mm

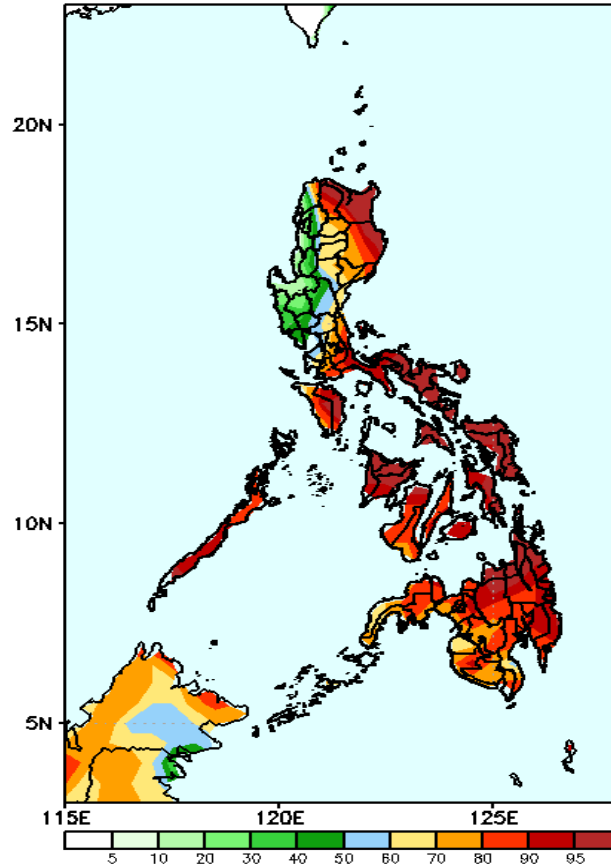
Week 2: Dec 30- Jan 05, 2023

GEFS Week-2 Precip Anomaly
Valid: 20221230 - 20230105



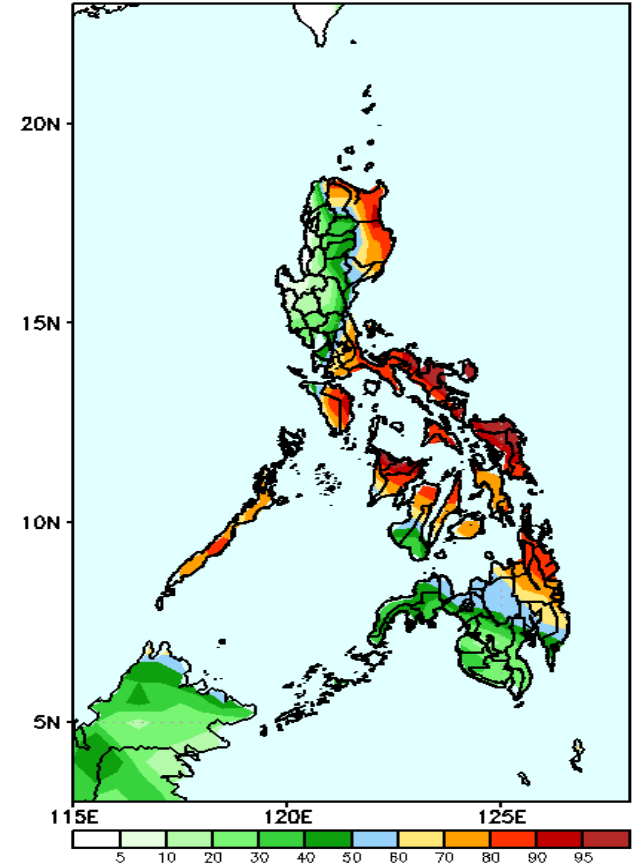
Increase of rainfall of 40-100mm in most parts of Luzon (except central part) and Visayas and CARAGA Region while 40-60mm rainfall deficit is expected in Bukidnon and Lanao provinces during the forecast period.

GEFS Week-2 Exceedance Prob. > 25mm
Valid: 20221230 - 20230105



High probability of rainfall to exceed 25mm in most parts of the country except in Ilocos Region and Central Luzon during the forecast period.

GEFS Week-2 Exceedance Prob. > 50mm
Valid: 20221230 - 20230105

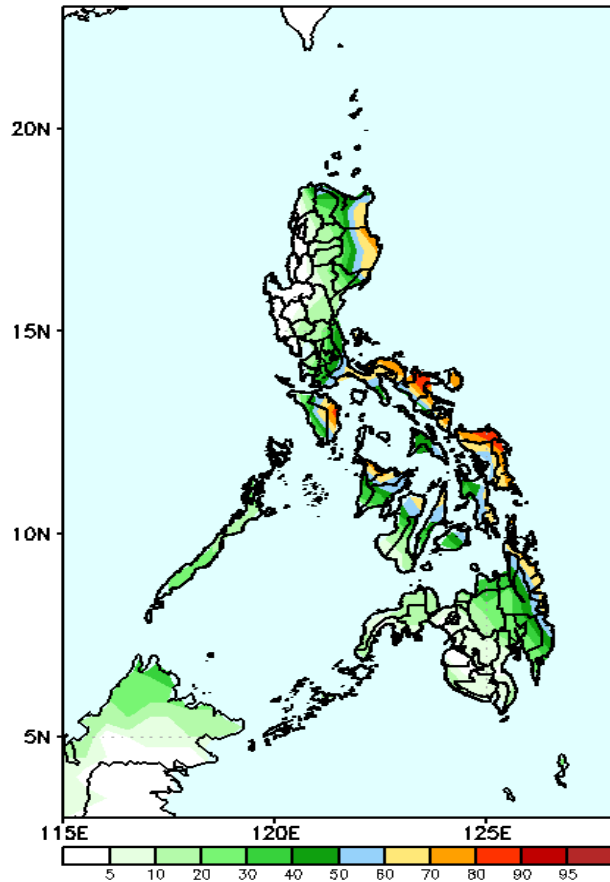


High probability of rainfall to exceed 50mm in Apayao, Cagayan, Isabela, most parts of Southern Luzon, Visayas and eastern Mindanao while less likely for the rest of the country during the forecast period.

Exceedance Probability > 100/150/200 mm

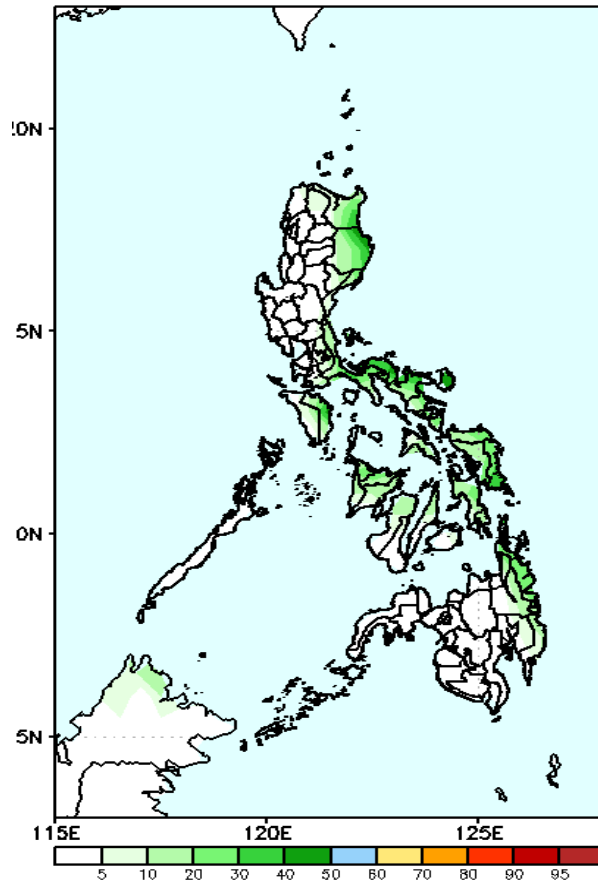
Week 2: Dec 30- Jan 05, 2023

GEFS Week-2 Exceedance Prob. > 100mm
Valid: 20221230 - 20230105



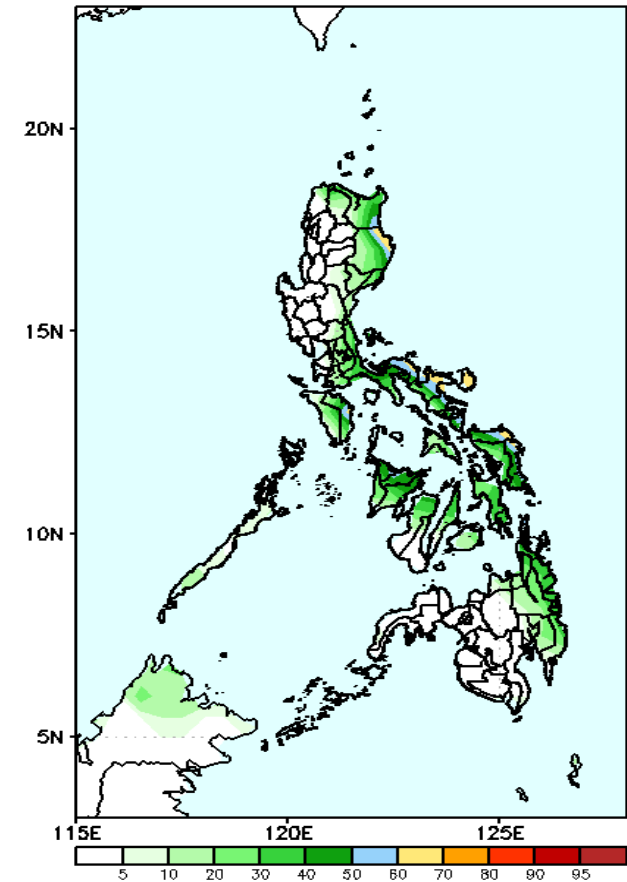
60-95% probability of rainfall to exceed 100mm Cagayan, Isabela, Occ. Mindoro, Bicol Region, Eastern Visayas, Aklan, Capiz and CARAGA Region while less likely for the rest of the country during the forecast period.

EFS Week-2 Exceedance Prob. > 200mm
Valid: 20221230 - 20230105



Low probability of rainfall to exceed 150mm in most parts of the country during the forecast period.

GEFS Week-2 Exceedance Prob. > 150mm
Valid: 20221230 - 20230105

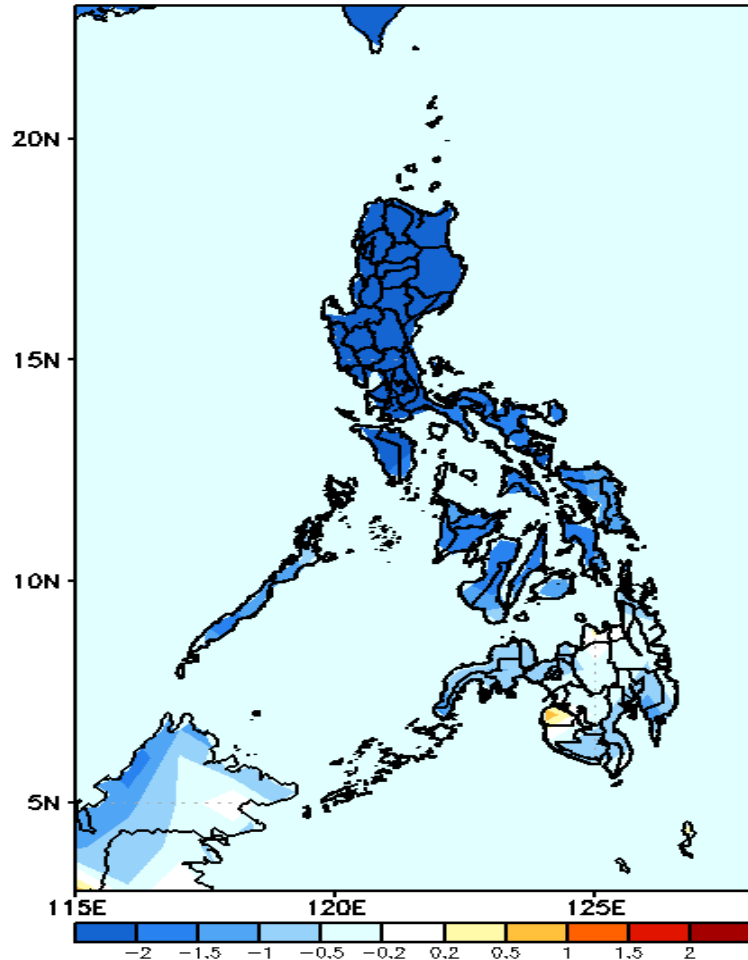


Low probability of rainfall to exceed 200mm in most parts of the country during the forecast period.



GEFS Week-1 & 2 Forecasts: T2m Anomaly

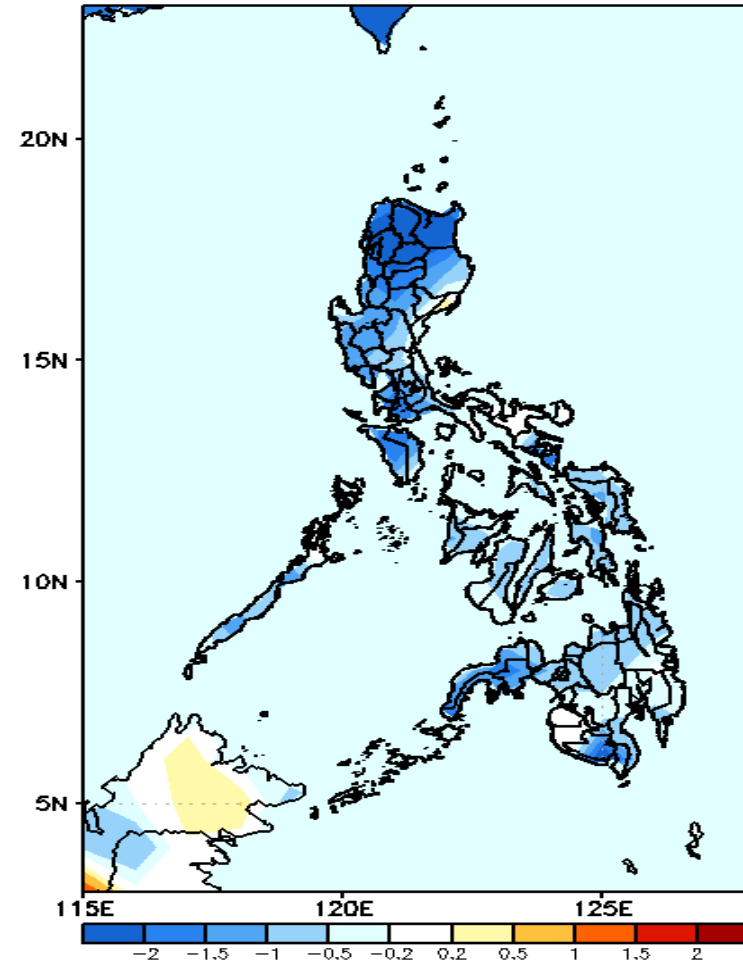
GEFS Week-1 T2m Anomaly
Valid: 20221223 - 20221229



2m Temperature Week 1: Dec 23-29, 2022

Cooler than average surface air temperature will likely experience in most parts of Luzon and Visayas while average to slightly cooler in Mindanao during the forecast period.

GEFS Week-2 T2m Anomaly
Valid: 20221230 - 20230105



2m Temperature Week 2: Dec 30- Jan 05, 2023

Slightly cooler to cooler than average surface air temperature will likely experience in most parts of the country during the forecast period.